



Enhance your prospective program with accurate condition analytics

Apixio's Care Analytics generates more value and reduces provider abrasion from prospective risk adjustment programs with accurate, AI-powered condition suspects.



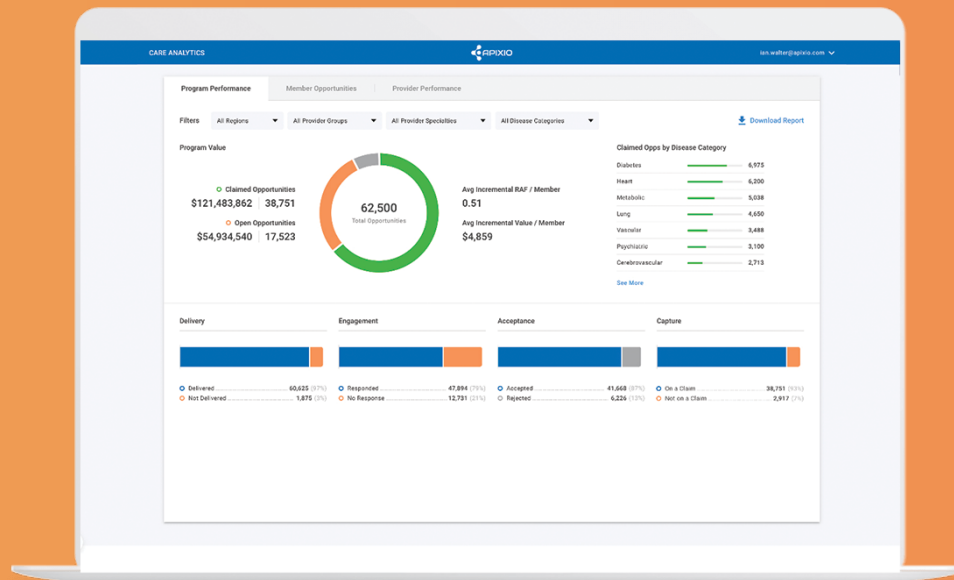


Increase your risk capture with prospective intelligence

Risk adjustment teams face pressure to move away from retrospective chart reviews for MA. To maximize patient engagement, reduce abrasion from retrospective reviews, and facilitate more accurate risk capture upstream, many organizations are implementing prospective programs for revenue integrity. However, developing an accurate, actionable, and timely suspect list and measuring performance is time-consuming and complicated.

Care Analytics: AI-powered diagnosis gap suspects

Apixio's Care Analytics solution uses artificial intelligence (AI) algorithms that generate a report of risk-adjusting diagnosis gaps. These insights power existing prospective workflows with reliable intelligence on condition suspects and recaptures. Program performance is tracked and monitored with the Care Analytics Dashboard.



Smarter HCC suspects in any workflow

Whether you're launching a prospective program for the first time or currently use paper-based, fax-based, or technology-enabled workflows, Apixio's Care Analytics will help your organization enhance your approach.

Reliable data insights inform suspect and recapture list generation, member prioritization, member outreach, and point-of-care documentation.

How It Works

- Apixio ingests medical and Rx claims, clinical records, lab results, RAPS and previously known codes, patient eligibility data, provider rosters, and other data.
- Proprietary AI algorithms identify patients with previously coded conditions, documented conditions that haven't been coded, and predicted suspected conditions based on procedures, diagnoses, medications, and lab test results.
- Apixio's Care Analytics technology generates a list of member diagnosis gaps and delivers through your established workflows (opportunity status report, member condition report, API to external systems) to share with physician practices for review and documentation.
- Our technology provides dashboards that measure and track closed gaps, provider engagement, and program value.

Benefits for health plans

- Higher physician acceptance rate and reduced abrasion from suspected conditions
- Earlier, more accurate reimbursement for population risk
- Actionable insights about your prospective program performance
- Free up time and resources from managing and analyzing multiple sources of data

Benefits for provider groups

- Reliable condition suspects with supporting documentation for review
- Improved risk capture and care gap closures during patient encounters
- Increased incentive payments from prospective risk programs
- Leverage risk adjustment experts to manage and analyze data

Care Analytics is a reporting & dashboard solution that powers existing prospective risk programs. Learn more at apixio.com.

AI Analytics for Value-Based Care

Improving healthcare outcomes requires access to the right data at the right time. Apixio is advancing value-based care with data-driven intelligence and analytics. Our AI solutions unlock actionable information from administrative data and unstructured clinical information. The results drive better decision-making and a smarter approach to healthcare.

www.apixio.com

P: (877) 427-4946

E: info@apixio.com

f | in | [@apixio](https://twitter.com/apixio)

1850 Gateway Drive, Suite 300

San Mateo, CA 94404